

Hydro Beam X7

Light Efficiency:

13 Lumen/Watt

Light Quality:

CRI: 70.1

Color Temperature:

7639 K

Output: 1433 lm

Peak: 4788 cd

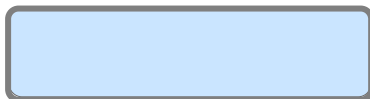
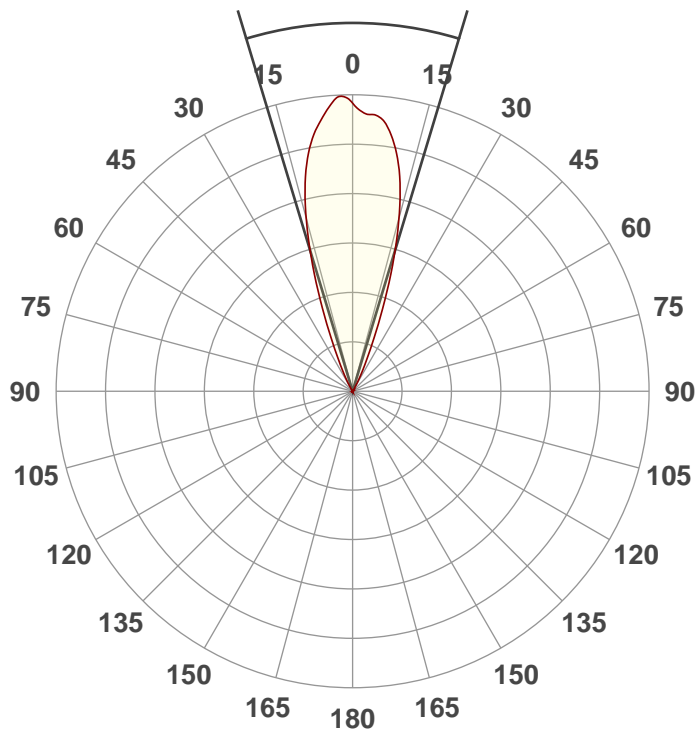
Power: 109.7 W

PF: 0.99



Beam Angle

33.6°



CIE 1931
x: 0.301
y: 0.300

Product Name:

Hydro Beam X7

Test:

Zoom Out White

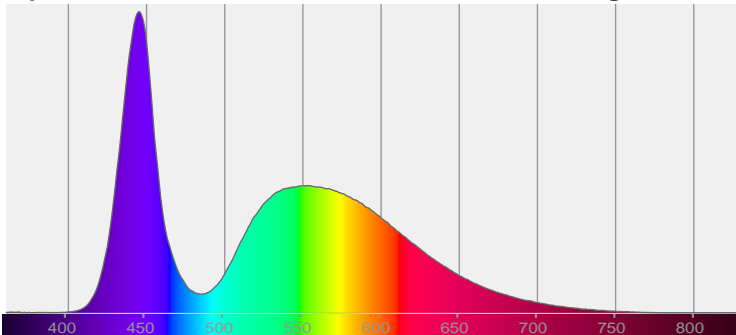
Date:

6/20/2019

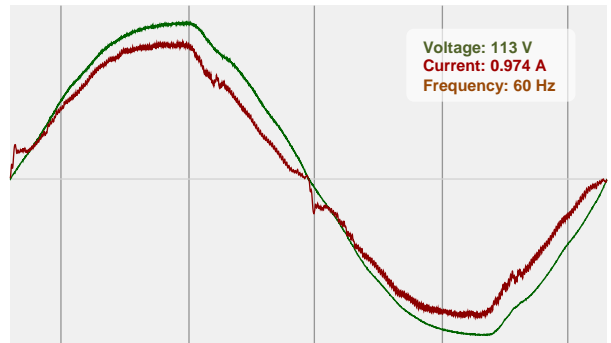
Note:

Spectra

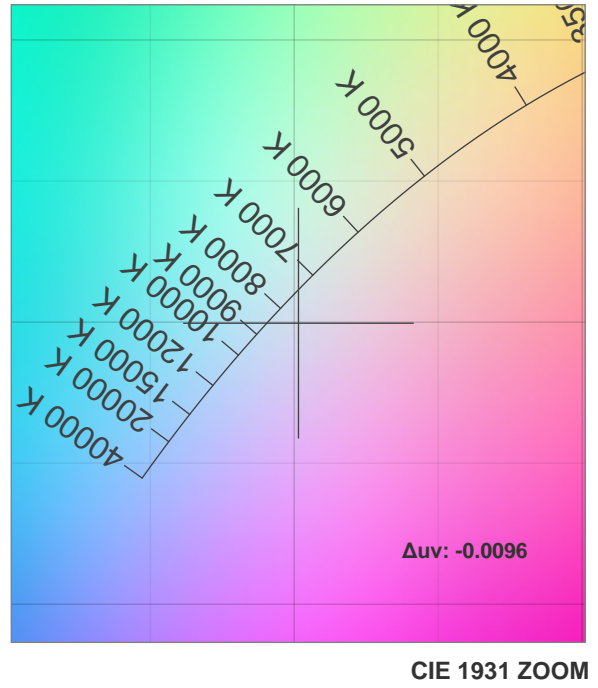
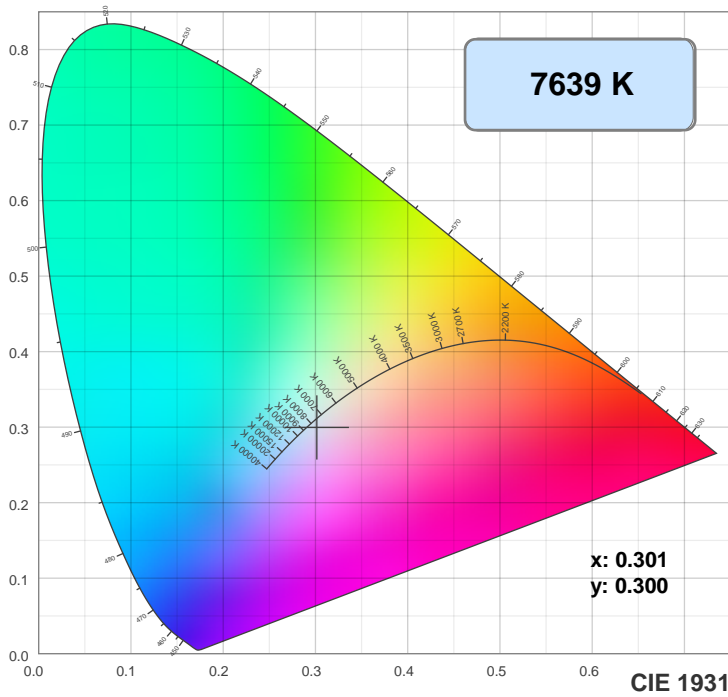
Dominant Wavelength: 360nm



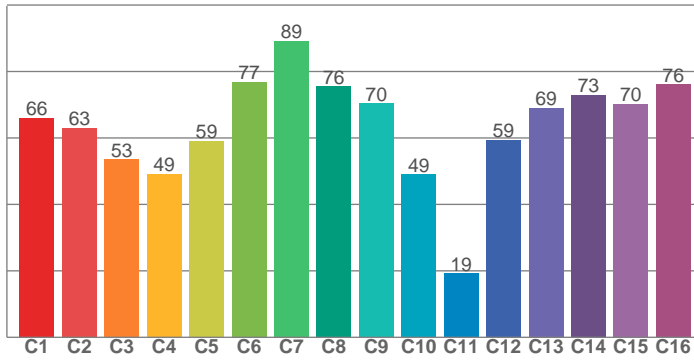
Power



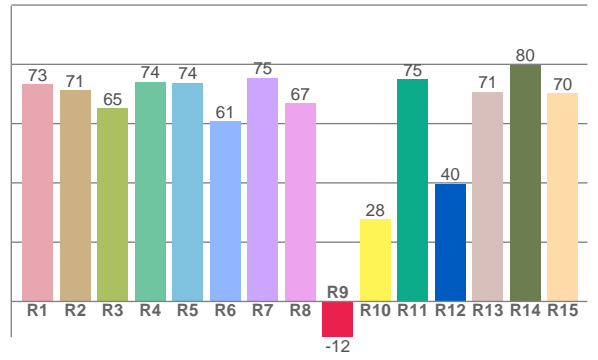
Color Details



TM30: 62.4



CRI: 70.1 (R1-R8)



CRI R values, only R1-R8 are used to calculate final CRI value

R1	R2	R3	R4	R5	R6	R7	R8	R9	R10	R11	R12	R13	R14	R15
73.3	71.3	65.2	74.2	73.8	60.9	75.5	66.8	-12.1	27.6	74.9	39.7	70.8	79.9	70.2

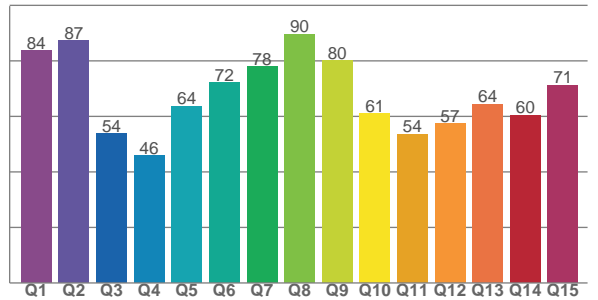
TM30 C values, 16 binned values out of total of 99 C values

C1	C2	C3	C4	C5	C6	C7	C8	C9	C10	C11	C12	C13	C14	C15	C16
66.0	63.0	53.5	49.2	59.2	76.9	89.2	75.5	70.4	49.0	19.2	59.3	69.1	72.9	70.2	76.1

CQS Q values

Q1	Q2	Q3	Q4	Q5	Q6	Q7	Q8	Q9	Q10	Q11	Q12	Q13	Q14	Q15
83.7	87.4	53.8	45.9	63.6	72.1	77.9	89.6	80.1	61.0	53.7	57.3	64.4	60.4	71.3

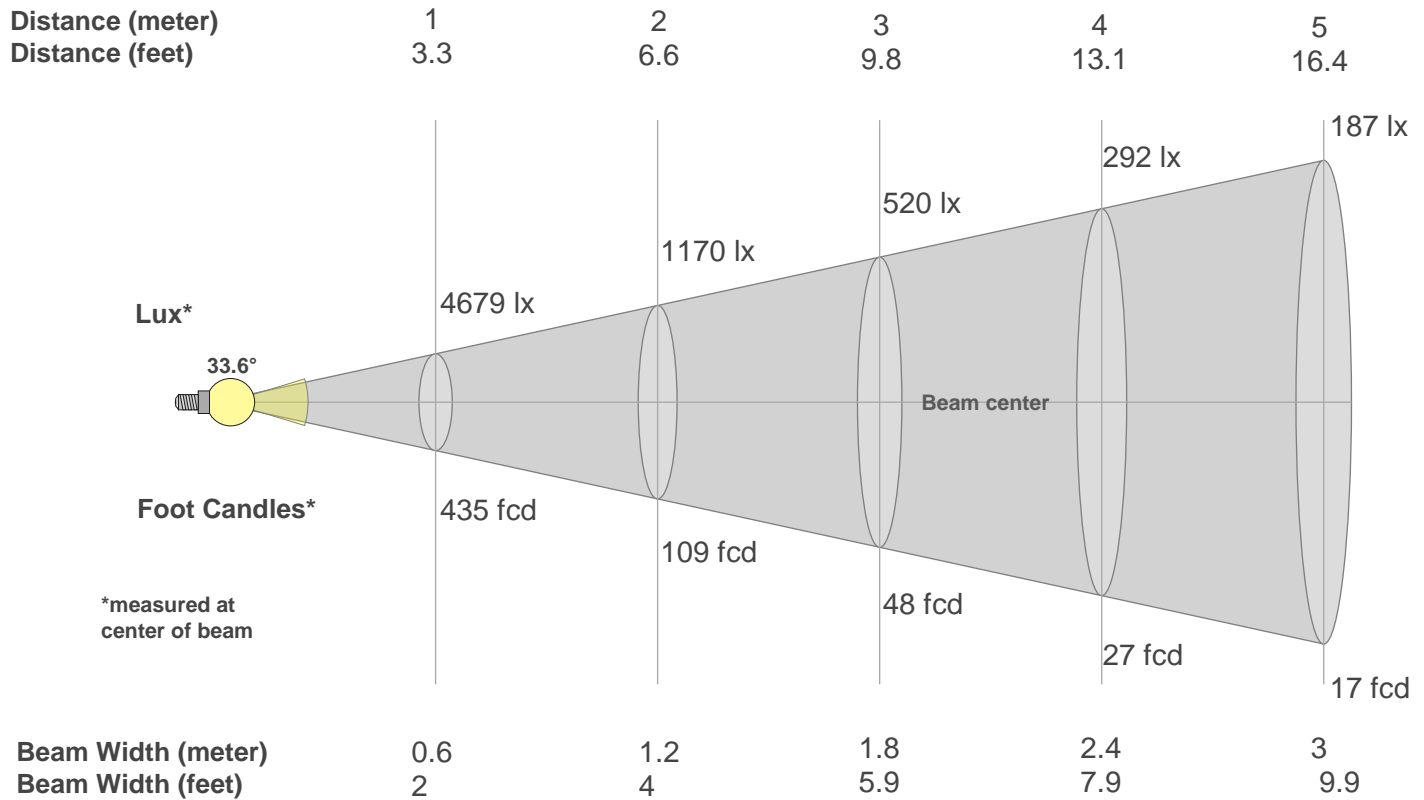
CQS: 65.6



Color Parameters

Color Temperature	Color Rendering Index	Red Component	Color Fidelity	Color Gamut	Color Quality Scale	Color Coordinate CIE 1931	Color Coordinate CIE 1931	Color Coordinate	Color Coordinate	Color Deviation from Black Body
CCT	CRI	CRI R9	TM30 Rf	TM30 Rg	CQS	x	y	u	v	Δuv
7639 K	70.1	-12.1	62.4	96.8	65.6	0.301	0.300	0.201	0.300	-0.0096

Beam Details



Beam Intensities from 1-20m

m	1	2	3	4	5	6	7	8	9	10	11	12	13	14	15	16	17	18	19	20
ft	3.3	6.6	9.8	13.1	16.4	19.7	23	26.2	29.5	32.8	36.1	39.4	42.7	45.9	49.2	52.5	55.8	59.1	62.3	65.6
lx	4679	1170	520	292	187	130	95	73	58	47	39	32	28	24	21	18	16	14	13	12
fcd	434.7	108.7	48.3	27.2	17.4	12.1	8.9	6.8	5.4	4.3	3.6	3	2.6	2.2	1.9	1.7	1.5	1.3	1.2	1.1

Intensities in 0° C-plane

0°	2°	4°	6°	8°	10°	12°	14°	16°	18°	20°	22°	24°	26°	28°	30°	32°	34°	36°	38°
4679	4775	4695	4503	4285	4009	3646	3182	2627	2027	1430	925	574	356	206	106	45	14	1	0
100%	102%	100%	96%	92%	86%	78%	68%	56%	43%	31%	20%	12%	8%	4%	2%	1%	0%	0%	0%

Intensities in 90° C-plane

0°	2°	4°	6°	8°	10°	12°	14°	16°	18°	20°	22°	24°	26°	28°	30°	32°	34°	36°	38°
4679	4775	4695	4503	4285	4009	3646	3182	2627	2027	1430	925	574	356	206	106	45	14	1	0
100%	102%	100%	96%	92%	86%	78%	68%	56%	43%	31%	20%	12%	8%	4%	2%	1%	0%	0%	0%

Intensities in 180° C-plane

0°	2°	4°	6°	8°	10°	12°	14°	16°	18°	20°	22°	24°	26°	28°	30°	32°	34°	36°	38°
4679	4550	4506	4446	4271	3999	3643	3178	2626	2028	1422	919	570	354	200	98	40	11	1	0
100%	97%	96%	95%	91%	85%	78%	68%	56%	43%	30%	20%	12%	8%	4%	2%	1%	0%	0%	0%

Intensities in 270° C-plane

0°	2°	4°	6°	8°	10°	12°	14°	16°	18°	20°	22°	24°	26°	28°	30°	32°	34°	36°	38°
4679	4550	4506	4446	4271	3999	3643	3178	2626	2028	1422	919	570	354	200	98	40	11	1	0
100%	97%	96%	95%	91%	85%	78%	68%	56%	43%	30%	20%	12%	8%	4%	2%	1%	0%	0%	0%

Beam Angle 50%	Field Angle 10%	Cutoff Angle 2,5%	Intensity Ratio in 120° Cone	Intensity Ratio in 90° Cone
33.6°	49.6°	59°	100.0%	100.0%